

BIGBELLY[®] SOLAR TRASH COMPACTOR



WAXIE Special Order Item #
88SPCBIGBELLY

Manufacturer: BigBelly
MFI #: BB3
Product: BigBelly Solar
Trash Compactor

Product Description:

- BigBelly uses the sun's energy to automatically compact trash at the point of disposal, dramatically increasing capacity 5 times within the same footprint as ordinary receptacles.
- Increased capacity reduces collection trips and can cut related fuel use and emissions by 80%. Enclosed design keeps pests out and litter in.
- BigBelly has proven successful in urban streets, parks, colleges, sports venues — and in all weather conditions.

Anywhere a lot of trash is generated, the BigBelly Solar Trash Compactor offers a compelling solution that is more environmentally preferable and operationally efficient!

Eliminate Overflowing Trash Cans
Reduce Operating Costs—Save Labor
Reduce Emissions and Fuel Use
Showcase Street Level Solar Solution!

View more info at www.waxie.com/green.html



(800) 995-4466
www.waxie.com

WAXIE[®]
SANITARY SUPPLY

Corporate Headquarters
9353 Waxie Way
San Diego, CA 92123



- ▶ Solar-powered, automatic compaction
- ▶ Reduces collections by 4 times or more
- ▶ Eliminates overflowing bins
- ▶ Keeps litter in, pests out
- ▶ No trenching or wiring needed
- ▶ Reliable, safe and easy to use
- ▶ Demonstrates commitment to community & environment
- ▶ Educate your constituents
- ▶ Ad mounts provide marketing platform



Modern solution



Classic problem

“The [BigBelly] solar trash receptacles have to go citywide. It will give us a more productive work force because you don’t have to pick them up every day.”

—Mayor Thomas Menino, City of Boston

“The machines are working magnificently. They are better than advertised.”

—Jim Burkhardt, Cincinnati Parks Department

“Without question, the BigBelly system has reduced litter and made the city cleaner and more efficient. With the time saved on fewer collections, we can redeploy workers to other important tasks.”

—Mayor David Cohen, City of Newton, Massachusetts

“The main thing for a Business Improvement District is you have to make it look neater. New benches and planters are nice, but you have to get rid of the litter. The BigBelly has been terrific for our beautification efforts.”

—Marie Torniali, Steinway Street BID, New York City



Bright ideas for waste management

Answers to FAQs

How much sunlight is needed?

The BigBelly® needs no direct sunlight. It runs on a 12-Volt battery that is kept charged by its solar panel on sunny or cloudy days. The battery provides a power reserve for several weeks, so it performs well even in northern latitudes.

Do the bags get too heavy?

Customers have not had problems with bag weight. We have designed the BigBelly to be simple and ergonomically friendly to use. Weight can also be controlled using a 5-position switch.

Is the machine safe to use?

Yes. The hopper prevents hands from reaching the compaction area, and the unit locks. The motor will not operate with the door open. The machine also runs on a safe, low voltage.

Does holding compacted trash create odor problems?

No. The BigBelly is an enclosed system, so odors are contained inside. Customers have reported improved odor control compared to open-air cans.

Is it expensive?

While more expensive than a regular trash can, the BigBelly reduces collection requirements 4 times or more, saving thousands over its lifetime. Contact us for a custom savings analysis.

Is it susceptible to vandalism?

BigBelly is made tough from heavy-gauge galvanized steel, polycarbonate shield and high impact ABS plastic sides. The BigBelly resists scratches, dents and graffiti and units are bolted down for added security.

Is it resistant to sand and water?

Yes. The exterior has passed a 10-year accelerated life-cycle corrosion test. BigBelly has few moving parts, and the simple, enclosed design helps keep out sand. The powder-coat finish is designed for long life in icy and marine environments.

How hard is it to maintain?

Maintaining the BigBelly is easy. Preventive maintenance includes routine chain lubrication every year and battery replacement about every 4-5 years.



MADE IN USA—PATENTS PENDING
CE AND RoHS COMPLIANT

Specifications

Dimensions: 26.1"W x 25.9"D x 50.4"H
(66.3 cm W x 65.8 cm D x 128 cm H)

Weight: 300 lbs. (137 kg)

Compaction Force: 1250 lbs. (568 kg)

Capacity: 160–240 gal. uncompacted
(606-908 liters)

Drive System: Gear-motor with chain drive.

Controls: fully automated, IC processor controlled system senses trash level, fullness and machine status.

Electronics: 12-Volt DC system with 30-Watt PV module

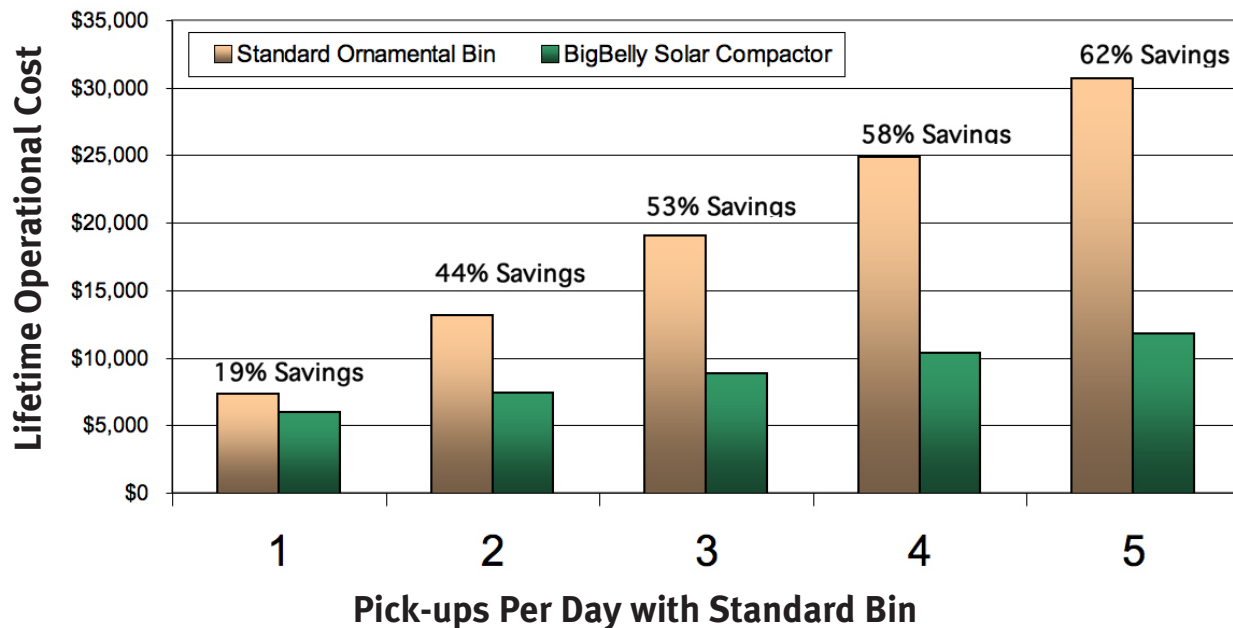
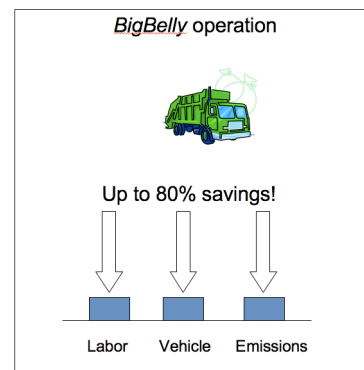
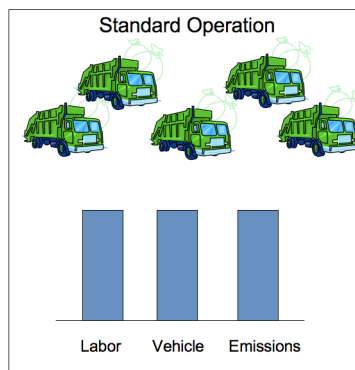
Materials: Galvanized steel with powder-coat finish and heavy-duty recyclable ABS plastic sides.



Lifetime Savings

BigBelly® Offers Dramatically Lower Lifetime Operational Costs

Depending on collection frequency, your standard ornamental bin is costing you between \$7,300 and \$30,000 over its lifetime! BigBelly lifetime operational costs are significantly lower, between \$6,000 and \$12,000. BigBelly uses solar power to compact trash at the point of disposal, increasing capacity by five times and reducing operational costs by up to 80%. In addition to lower costs associated with trucks, fuel and labor, BigBelly reduces green house gas and other harmful emissions.



Save as much as 62% with BigBelly!



Technology Pioneer 2007

BIGBELLY® SOLAR — PROUD RECIPIENT OF TOP AWARDS



Springwise Top 10 Eco & Sustainability Business Ideas in 2007



Notes and Assumptions

Avg pickup	\$2	per bin pick-up cost in major city contract with private haulers; actual range costs range \$1.5 to \$4
Compact ratio	4	varies on waste type; BigBelly compaction can be as high as 8:1
Bin price	\$750	assumes a mid-range ornamental bin; bin priced can range from \$500–\$1,500
Standard Bin life	4 years	bin life can range from 2–6 years
BB life	8 years	rugged, low maintenance, corrosion resistant construction
BB price	\$3,750	assumes mid-range volume pricing (additional volume discounts available)
BB maintenance	20%	over life of product
Other savings		additional savings and improvements

Frequency	Standard	BigBelly	Savings	
1	\$7,340	\$5,960	\$1,380	19%
2	\$13,180	\$7,420	\$5,760	44%
3	\$19,020	\$8,880	\$10,140	53%
4	\$24,860	\$10,340	\$14,520	58%
5	\$30,700	\$11,800	\$18,900	62%



Educational Campuses

Enhance your campus sustainability program with BigBelly® Solar Compactors!

- ▶ **Streamline operations**
— reduce collections by up to 80%!
Free up employees for higher-value activities
- ▶ **Functional, Visible and Educational!**
Reinforces campus sustainability efforts
- ▶ **Rapid return on investment**
BigBelly can pay its own way
- ▶ **Eliminate loose trash, rodent and insect problems**
Reclaim the character of your campus
- ▶ **Tremendous PR value**
Street-level solar: Walk the talk...NOW!
- ▶ **Safe and ultra-low maintenance**
Proven worldwide. Employ with confidence



“I was skeptical at first, but to my amazement, the machines are working great for the university. They’re very attractive and people really use them. We only have to empty them intermittently, and there’s no maintenance—we don’t have to worry about them at all. I’m a believer now.”

— Ted Woods
Refuse Coordinator Arizona State University

“...The “BigBelly” will prevent the need for up to 10 pickup truck visits to this busy corner of the campus, saving fuel and reducing emissions...”

— Harvard Green Campus Initiative:
Solar Trash Compactor Conserves Energy

“The [BigBelly] solar trash receptacles have to go citywide. It will give us a more productive work force because you don’t have to pick them up every day.”

— Mayor Thomas Menino
City of Boston



Technology
Pioneer 2007

BIGBELLY® SOLAR — PROUD RECIPIENT OF TOP AWARDS



Springwise Top 10
Eco & Sustainability
Business Ideas in 2007





Bright ideas for waste management

Answers to FAQs

How much sunlight is needed?

The BigBelly® needs no direct sunlight. It runs on a 12-Volt battery that is kept charged by its solar panel on sunny or cloudy days. The battery provides a power reserve for several weeks, so it performs well even in northern latitudes.

Do the bags get too heavy?

Customers have not had problems with bag weight. We have designed the BigBelly to be simple and ergonomically friendly to use. Weight can also be controlled using a 5-position switch.

Is the machine safe to use?

Yes. The hopper prevents hands from reaching the compaction area, and the unit locks. The motor will not operate with the door open. The machine also runs on a safe, low voltage.

Does holding compacted trash create odor problems?

No. The BigBelly is an enclosed system, so odors are contained inside. Customers have reported improved odor control compared to open-air cans.

Is it expensive?

While more expensive than a regular trash can, the BigBelly reduces collection requirements 4 times or more, saving thousands over its lifetime. Contact us for a custom savings analysis.

Is it susceptible to vandalism?

BigBelly is made tough from heavy-gauge galvanized steel, polycarbonate shield and high impact ABS plastic sides. The BigBelly resists scratches, dents and graffiti and units are bolted down for added security.

Is it resistant to sand and water?

Yes. The exterior has passed a 10-year accelerated life-cycle corrosion test. BigBelly has few moving parts, and the simple, enclosed design helps keep out sand. The powder-coat finish is designed for long life in icy and marine environments.

How hard is it to maintain?

Maintaining the BigBelly is easy. Preventive maintenance includes routine chain lubrication every year and battery replacement about every 4-5 years.



MADE IN USA—PATENTS PENDING
CE AND RoHS COMPLIANT

Specifications

Dimensions: 26.1"W x 25.9"D x 50.4"H
(66.3 cm W x 65.8 cm D x 128 cm H)

Weight: 300 lbs. (137 kg)

Compaction Force: 1250 lbs. (568 kg)

Capacity: 160–240 gal. uncompacted
(606-908 liters)

Drive System: Gear-motor with chain drive.

Controls: fully automated, IC processor controlled system senses trash level, fullness and machine status.

Electronics: 12-Volt DC system with 30-Watt PV module

Materials: Galvanized steel with powder-coat finish and heavy-duty recyclable ABS plastic sides.



Recycling Units

A complete system for managing solid waste and recyclables

The BigBelly® solar compactor with integrated recycling units is the world's only system that provides on-site compaction of solid waste and separation of recyclable materials. The combination of recycling units with BigBelly provides significant economic, environmental and educational benefits.



BigBelly with Bottle/Can & Paper Recycling Units—Made in USA—Patents Pending CE & RoHS Compliant

Features & Benefits

- ▶ **Economic benefit**
Potential to generate revenue stream
- ▶ **Environmental benefit**
Fewer materials going to landfill and less use of natural resources
- ▶ **Educational benefit**
Generate community awareness and involvement and demonstrate environmental leadership
- ▶ **Integrated design & shared materials**
Seamlessly combines with BigBelly
- ▶ **Paper, bottle/can & single stream recycling units**
Enables multiple configurations to separate recyclable streams
- ▶ **Specific paper/bottle openings & graphics**
Encourages recycling of proper material
- ▶ **Enclosed design**
Water resistant and discourages pilfering
- ▶ **50 gallon leakproof bin**
Contains liquid and requires no bag

BigBelly Recycling Unit Options



BigBelly with Bottle/Can & Paper Recycling Units



BigBelly with Bottle/Can Recycling Unit



BigBelly with Single Stream Recycling Unit



BigBelly with Paper Recycling Unit

Product Specifications

	BigBelly with 1 Recycling Unit	BigBelly with 2 Recycling Units
Dimensions	50.1"W x 25.9"D x 50.4"H (127.3 cm W x 65.8 cm D x 128 cm H)	73.7"W x 25.9"D x 50.4"H (187.2 cm W x 65.8 cm D x 128 cm H)
Bin	50 gallon polyethylene (189.3 liters) 19" x 19" x 34" (48.3 cm x 48.3 cm x 86.4 cm)	50 gallon polyethylene (189.3 liters) 19" x 19" x 34" (48.3 cm x 48.3 cm x 86.4 cm)
Weight	470 lbs. (213.2 kg)	620 lbs. (281.2 kg)
Insertion Opening	Bottle/Can opening: 5" diameter Paper opening: 1.75" x 12" (4.4 cm x 30.5 cm) Single stream: Bottle/Can opening: 5" diameter (12.7 cm) Paper opening: 1.75" x 10" (4.4 cm x 25.4 cm)	Bottle/Can opening: 5" diameter (12.7 cm) Paper opening: 1.75" x 12" (4.4 cm x 30.5 cm)

Environmental Footprint

At BigBelly Solar, in addition to making products that are good for the environment, the standards we meet, materials we choose and the way we build our products is also good for the environment.

Side panels and Hopper Cover

Our black ABS plastic contains post consumer recycled content of 80% to 100% and can itself be recycled.

Packaging

We use recycled cardboard and wooden pallets that can be recycled.

Powder Coat Painting

An environmentally friendly way to paint, it is nontoxic, has no fumes and virtually no VOC (volatile organic compounds).

RoHS Compliant

(Restriction of Hazardous Substances Directive)

BigBelly Solar products meet this tough European standard. There is no lead used in our circuit boards and no chromium is used in the plating of our steel.

Lead Acid Battery

Our battery is recyclable.

Leak Proof Bins

Customer can choose to eliminate bags entirely.



- ▶ Solar-powered, automatic compaction
- ▶ Reduces collections by 4 times or more
- ▶ Eliminates overflowing bins
- ▶ Keeps litter in, pests out
- ▶ No trenching or wiring needed
- ▶ Reliable, safe and easy to use
- ▶ Demonstrates commitment to community & environment
- ▶ Educate your constituents
- ▶ Ad mounts provide marketing platform



Modern solution



Classic problem

“The [BigBelly] solar trash receptacles have to go citywide. It will give us a more productive work force because you don’t have to pick them up every day.”

—Mayor Thomas Menino, City of Boston

“The machines are working magnificently. They are better than advertised.”

—Jim Burkhardt, Cincinnati Parks Department

“Without question, the BigBelly system has reduced litter and made the city cleaner and more efficient. With the time saved on fewer collections, we can redeploy workers to other important tasks.”

—Mayor David Cohen, City of Newton, Massachusetts

“The main thing for a Business Improvement District is you have to make it look neater. New benches and planters are nice, but you have to get rid of the litter. The BigBelly has been terrific for our beautification efforts.”

—Marie Torniali, Steinway Street BID, New York City



Bright ideas for waste management

Answers to FAQs

How much sunlight is needed?

The BigBelly® needs no direct sunlight. It runs on a 12-Volt battery that is kept charged by its solar panel on sunny or cloudy days. The battery provides a power reserve for several weeks, so it performs well even in northern latitudes.

Do the bags get too heavy?

Customers have not had problems with bag weight. We have designed the BigBelly to be simple and ergonomically friendly to use. Weight can also be controlled using a 5-position switch.

Is the machine safe to use?

Yes. The hopper prevents hands from reaching the compaction area, and the unit locks. The motor will not operate with the door open. The machine also runs on a safe, low voltage.

Does holding compacted trash create odor problems?

No. The BigBelly is an enclosed system, so odors are contained inside. Customers have reported improved odor control compared to open-air cans.

Is it expensive?

While more expensive than a regular trash can, the BigBelly reduces collection requirements 4 times or more, saving thousands over its lifetime. Contact us for a custom savings analysis.

Is it susceptible to vandalism?

BigBelly is made tough from heavy-gauge galvanized steel, polycarbonate shield and high impact ABS plastic sides. The BigBelly resists scratches, dents and graffiti and units are bolted down for added security.

Is it resistant to sand and water?

Yes. The exterior has passed a 10-year accelerated life-cycle corrosion test. BigBelly has few moving parts, and the simple, enclosed design helps keep out sand. The powder-coat finish is designed for long life in icy and marine environments.

How hard is it to maintain?

Maintaining the BigBelly is easy. Preventive maintenance includes routine chain lubrication every year and battery replacement about every 4-5 years.



MADE IN USA—PATENTS PENDING
CE AND RoHS COMPLIANT

Specifications

Dimensions: 26.1"W x 25.9"D x 50.4"H
(66.3 cm W x 65.8 cm D x 128 cm H)

Weight: 300 lbs. (137 kg)

Compaction Force: 1250 lbs. (568 kg)

Capacity: 160–240 gal. uncompacted
(606-908 liters)

Drive System: Gear-motor with chain drive.

Controls: fully automated, IC processor controlled system senses trash level, fullness and machine status.

Electronics: 12-Volt DC system with 30-Watt PV module

Materials: Galvanized steel with powder-coat finish and heavy-duty recyclable ABS plastic sides.



Customization

BigBelly® is a powerful promotional tool

An innovative and highly visible application of renewable energy, BigBelly® attracts attention wherever it is deployed. Customize your BigBelly®, mirror your branding system and get your message across with custom colors, decals, silk screens, ad panels and wraps. Perfect for your business, school, city or town.

Ad Panels



- ▶ Graphic dimensions are 18" x 30"
- ▶ Snap fit sides and corners for easy change of graphics
- ▶ Powder coated aluminum with clear polycarbonate face for durability & weather resistance
- ▶ Consult price list for pricing

Color



- ▶ Custom colors are available as painted or colored plastic
- ▶ Color is applied to ABS side panels, hopper cover and door handle
- ▶ Consult price list for minimum quantities and pricing
- ▶ Call for information regarding required lead time

Silk Screen



- ▶ Provide artwork for your logo or seal
- ▶ Custom silk screening is applied in the factory
- ▶ Durable and weather resistant treatment
- ▶ Set up charge is \$300 and silk screening ranges from \$130 to \$300 based on volume and complexity

Decal



- ▶ Provide your artwork for a custom decal
- ▶ 18" x 22" front decal or 18" x 30" side decal, contains vinyl coating for durability and weather resistance
- ▶ Decal can be applied in the factory or in the field
- ▶ Consult price list for quantities and pricing

Wrap

- ▶ BigBelly® can be wrapped just like a bus or automobile
- ▶ BigBelly Solar will connect the customer with a wrap company
- ▶ Wrap company will develop graphics with customer



- ▶ Local installer applies wrap onsite or in the factory
- ▶ Estimated pricing for wrapping all 4 sides is \$240 for the graphics plus \$250 for installation with discounts for multiple machines. Note: one-time design charge may apply.



Bright ideas for waste management

Commitment to the Environment

Powder Coat Painting

- ▶ Powder coat painting is the most environmentally friendly way to paint our metal
- ▶ It is not toxic, not hazardous, there is no waste, no fumes and virtually no VOC (volatile organic compounds)
- ▶ The powder gets a positive charge and is attracted to a grounded piece of metal. The part is then baked in a kiln and powder flows evenly across the part.

Packaging

- ▶ BigBellySolar has made an effort to reduce the amount of packaging for our product (balanced by need to protect BigBelly in shipping)
- ▶ Less cardboard and plastic for our customer to recycle or dispose of
- ▶ Cardboard and pallets are recyclable

Reduction in Bags

- ▶ Part of overall BigBelly efficiency model is reduction in number of bags vs. traditional receptacle
- ▶ We estimate a 75% reduction in # of bags needed w/ a BigBelly

Our Suppliers

- ▶ Our suppliers have several common characteristics
- ▶ All have relatively new state of the art plants, all are focused on meeting and exceeding EPA and local environmental standards, all have shown impressive gains in this area.
- ▶ For example, our source for manufacturing, based in VT, has successfully implemented programs to reduce noise and traffic for the surrounding local community, has reduced VOC (volatile organic compound) emissions by 90%, has made impressive gains on energy efficiency and recycling of various material used in its facilities. It meets ISO9001 standard for quality management systems and complies with ISO14001 environmental standards.

BigBelly is CE and RoHS Compliant

- ▶ CE means BigBelly conforms to tough European safety standards
- ▶ RoHS = Restriction of Hazardous Substances Directive
- ▶ RoHS restricts the use of six hazardous materials (lead, cadmium, mercury, hexavalent chromium, and two fire retardants PBBB and PBDE)
- ▶ No lead is used in BigBelly circuit boards and no chromium used in the plating of our sheet metal. Also, our product does not contain the other hazardous materials listed.
- ▶ RoHS is not mandatory, we choose to meet this higher requirement and pay more to do so

Side panels and Hopper Cover

- ▶ Our black ABS plastic contains post consumer recycled content of 80% to 100% and can itself be recycled.



New Leak Proof Bins

- ▶ We have developed leak-proof bins for BigBelly
- ▶ Customer can choose to eliminate bags entirely with this new bin

Batteries

- ▶ Our lead acid battery is essentially the same as an automotive battery
- ▶ According to AAA, in the US there are 100 million automotive batteries sold per year and approximately 95%+ are recycled
- ▶ Our battery is recyclable

MADE IN USA — PATENTS PENDING
CE AND ROHS COMPLIANT



CLEAN

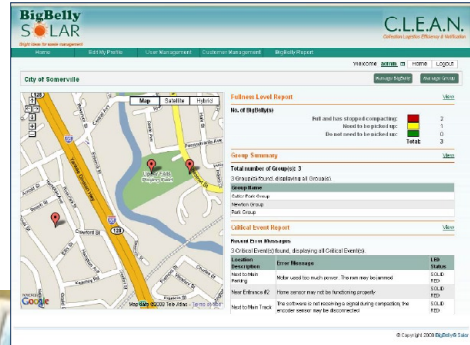
COLLECTION LOGISTICS EFFICIENCY AND NOTIFICATION

Wireless Monitoring System

Save more time, money, & fuel with BigBelly® CLEAN wireless technology

Advantages

- ▶ See real-time BigBelly operational data right at your desk
- ▶ Monitor collection activity to eliminate unnecessary pickups and free up workers from on-street status checks
- ▶ Optimize collection efforts for faster ROI and increased savings for your business



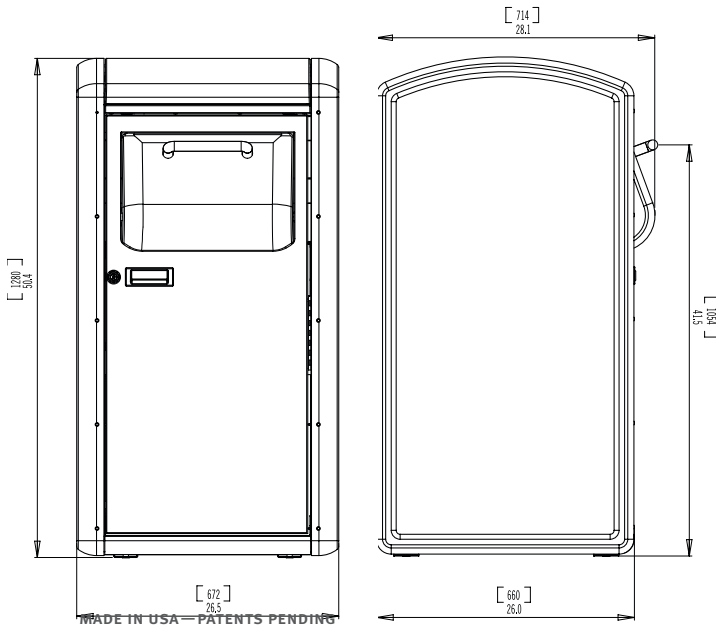
Simple & Easy to Use

- ▶ BigBelly solar compactors are upgraded with wireless hardware
- ▶ **CLEAN** sends data through standard SMS (text messaging) format to our online server
- ▶ Password-protected software application on the web allows access from any computer so there's no software to buy or maintain
- ▶ Our easy-to-navigate application displays customizable maps, fullness reports, group lists and critical alerts

One thing is certain: conditions in the field are constantly changing. Currently, managers are either unaware of these conditions or find out about them after the fact—if at all. **CLEAN** provides accurate, real-time information from every BigBelly in the field. Combined with the onsite solar-powered compaction of BigBelly, **CLEAN** will enable you to further optimize trash collection, achieve a faster ROI, monitor collections, increase ongoing savings and increase environmental benefits.



Technical Specs



Overall Machine Dimensions

- Height: 50.4" (1281mm)
- Width: 26.1 (664mm)
- Depth: 25.9" (657mm)
- Handle Height (ADA Compliant): 41.6" (1056mm)
- Weight: 300 lbs (136 kg)
- Trash Hopper Insertion Opening: 6" x 17" (152mm x 432mm)
- Bin Volume: 32 gallons
- Liner Bag: 32" H, 92" circumference (recommended thickness at least 2 mil)
- Conforms to ADAH standards

Compaction Features

- Compaction Force: 1250 lbs. max.(570 kg)
- Cycle Time: 41 seconds (users can deposit trash during cycle—no lock-out)
- Motor Size: 1/6-HP DC gear-motor
- System Voltage: 12 Volts DC
- Drive System: Gear-motor with chain drive (non-hydraulic); ANSI No. 40 heavy-duty chains
- Fully automated, IC processor controlled system senses trash level, fullness and machine status
- 3-color LED status lamps indicate compacted trash level, machine status and error codes
- Unique design achieves deep ram penetration
- Vertical ram travel provides even compaction

Safety Features

- CE approved
- Fully interlocked access doors protect users and service personnel
- Locked front trash removal door
- Separately keyed service access
- Fault-tolerant design for trash hopper insertion door prevents access to compaction area
- Low-voltage system

Materials

- RoHS compliant
- Galvanized sheet metal steel interior and exterior construction (recycled content)
- Heavy duty plastic side panels for dent and scratch resistance (recycled content)
- Exterior Finish: polyester TGIC powder-coat finish for outdoor and salt-spray durability
- Trash Bin: single bin is leak proof made out of low-density polyethylene plastic

Photovoltaic System

- Polycrystalline silicon cell module
- Nominal Output: 30 Watts
- Shock-dampening mount system
- PV panel protected by polycarbonate bubble
- Spill-proof, sealed maintenance-free 12V battery
- Charge maintained by Pulse Width Modulator
- Cordless, self-powered unit requires no wiring
- Fully portable – no installation required

Guide for ordering BB3

The purpose of this document is to make sure everyone knows what ships with a BB3 and what needs to be specified on the order sheet.

Standard machine description

- Two standard colors - black and green
 - Green has slightly higher price because it is not recycled material
- Center section of machines is always gray. Color determined by the side skins and hopper.
- International trash icon silk screened on all four sides of the machine.
- Small product identification on the top door with our BigBelly logo that says: "BigBelly Solar Compactor"
- Leak proof trash bins are standard on the BB3.
- The required mounting bracket comes with the machine.

What ships automatically with each machine

- 2 front door keys
- 2 magnetic key fobs
- Quick start guide
- Concrete mounting bolts (starting mid-November 2007)

What needs to be specified on order

- Machine color
- Number of users manuals (also available online from the Distributors page)
 - For each customer, we will provide up to 2 total at no cost
 - For each wholesaler, we will provide up to 1 per machine at no cost
 - If a customer or wholesaler has requests in excess of these numbers, we'll evaluate their request on a case by case basis. Extra manuals are available for purchase.
- Any accessories
 - *Note: Check current price sheet for available accessories*
- Number of bags (boxes of 50)
 - *Note: Same bags as BB2*
- Ship to address and contact information
- Lift gate required or not
- Other special shipping instructions

Note: No torx wrenches used with BB3



COST SAVINGS ANALYSIS

Prepared For:
City of Philadelphia
 Company Contact:
John Smith
 Collection Route:
Route 3 & Route 4

Prepared By:
Bill Eddy
 July 8, 2009

Input customer data in yellow.

Current Collection System						
Number of bins in target area	150	bins		Total route time (including travel from garage)	5.0	hours
Size of each bin	35	gallons		Vehicle cost/hour fully loaded (US Gov't FEMA)	\$ 60	
Number of collections each week	17			# of people on collection route	2.0	
Time needed to collect each bin	2.0	minutes		Labor rate including benefits	\$ 52.00	
Total Labor Rate (including benefits)	\$ 104.00			Trash collected (per week)	89,250	gallons

BigBelly Collection System (Proposed Data)						
				Select a compaction factor (between 4 to 7):	4.00	
Number of bins in target area	150	bins		Total route time (including travel from garage)	5.0	hours
Size of each BigBelly w/ compaction factor	128.0	gallons				
Number of collections each week	4.65	each				
Time needed to collect each bin	2.0	minutes				
Total Labor Rate (including benefits)	\$ 104.00			Trash collected (per week)	89,250	gallons

Annual Cost of Current Collection System		
Total hours per year on route	4,420	hours
x Labor Rate (fully loaded)	\$ 104	
Annual Labor Cost:	\$ 459,680	
Vehicle - hours per year	4,420	hours
x Vehicle Cost (per hour fully loaded)	\$ 60	FEMA rate
Annual Vehicle Cost:	\$ 265,200	
Total Annual Cost:	\$ 724,880	

Annual Cost of BigBelly Collection System		
Total hours per year on route	1,209	hours
x Labor Rate (fully loaded)	\$ 104	
Annual Labor Cost:	\$ 125,694	
Vehicle - hours per year	1,209	hours
x Vehicle Cost (per hour fully loaded)	\$ 60	
Annual Vehicle Cost:	\$ 72,516	
Total Annual Cost:	\$ 198,209	
Annual Reduced Operating Costs:	\$ 526,671	

Economic Payback			
Cost of each BigBelly unit	\$ 3,368		Total cost for BigBelly Collection System
Payback Term:	0.96	years	\$ 505,200
			Ten Year Cost Savings: \$ 4,761,506

Lease Summary	
Term (in months):	60
Factor:	0.01851
Payment (per unit):	\$ 62.34

Annual Savings Cash Flow - Lease Period						
Year:		1	2	3	4	5
Annual Savings:		\$526,671	\$526,671	\$526,671	\$526,671	\$526,671
Annual Payments:		(\$112,215)	(\$112,215)	(\$112,215)	(\$112,215)	(\$112,215)
Net Savings:		\$414,456	\$414,456	\$414,456	\$414,456	\$414,456
Cumulative Savings:		\$414,456	\$828,911	\$1,243,367	\$1,657,822	\$2,072,278
Annual Savings Cash Flow - Post Lease						
Year:		6	7	8	9	10
Annual Savings:		\$526,671	\$526,671	\$526,671	\$526,671	\$526,671
Annual Payments:		\$0	\$0	\$0	\$0	\$0
Net Savings:		\$526,671	\$526,671	\$526,671	\$526,671	\$526,671
Cumulative Savings:		\$2,598,949	\$3,125,619	\$3,652,290	\$4,178,961	\$4,705,631