

VIRUS & INFLUENZA

PREVENTION GUIDE



WAXIE®
SANITARY SUPPLY

The Most Trusted Name In Clean. Since 1945.

Virus and Influenza – Occupant Wellness

Overview

According to the [Centers for Disease Control and Prevention \(CDC\)](#),¹ **Influenza (flu)** is a contagious respiratory illness which is caused by [influenza viruses](#)² and that affects the nose, throat and sometimes lungs. [These influenza \(or flu\) viruses are usually transmitted person-to-person](#)³ by droplets made when someone who has the flu either coughs, sneezes or talks – and then when these droplets land on another person's mouth or nose, or are inhaled into another person's lungs, that other person can potentially be infected by the influenza virus.³ [A person can also potentially catch the flu by touching a surface or object which has the flu virus on it](#), and then touching their own nose or mouth.³

The influenza virus most often leads to a mild (but still not pleasant) illness which can last up to two weeks – but in some instances the illness can be severe enough to require hospitalization, and can even lead to death for some people who have pre-existing medical conditions such as asthma, chronic lung disease, heart disease, a weakened immune system or other conditions as described on the [CDC website](#).⁴

The best way to prevent influenza infection is to get [vaccinated](#).⁵

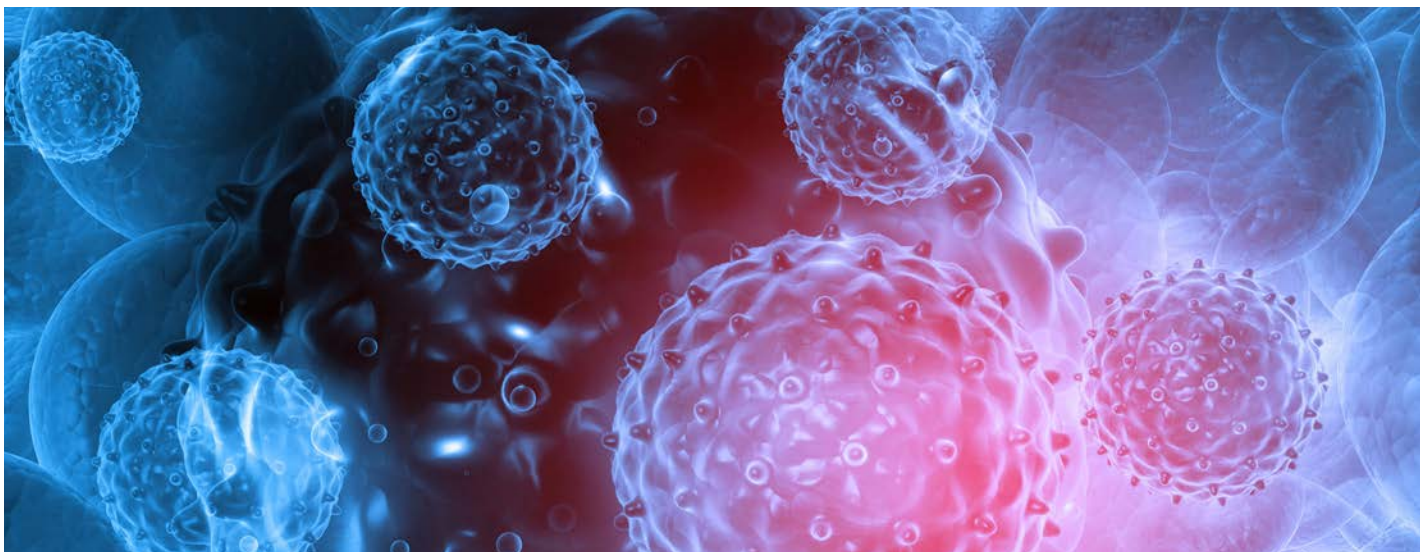
The [CDC estimates](#)⁶ that since 2010, seasonal influenza has resulted in approximately 9.2 million to 35.6 million illnesses, 140,000 to 710,000 hospitalizations, and between 12,000 and 56,000 deaths each year in the United States alone.⁶ And while influenza viruses are present year-round, they are most prevalent in the fall and winter months starting in October and peaking between December and February during what is frequently referred to as the “[Flu Season](#)”.⁷

Symptoms

Influenza illness can come on abruptly, and typically a person who has caught the flu will experience some or all of the following [symptoms](#)⁸: fever, cough, sore throat, runny or stuffy nose, muscle or body aches, headaches, fatigue, and possibly vomiting and diarrhea.⁸

Frequently [symptoms of the flu and the common cold are similar](#)⁹, but although they are both respiratory illnesses, they are each caused by different viruses.

Typically the flu is worse than a cold, and [symptoms will be more abrupt and severe](#).⁹



Prevention

According to both the [CDC](#)⁵ and the [World Health Organization \(WHO\)](#),¹⁰ the most effective way to prevent becoming ill is to get vaccinated – and then to supplement vaccination with personal protective measures such as regular hand washing with proper drying of the hands; good respiratory hygiene (covering mouth and nose when coughing or sneezing, and using tissues and disposing of them correctly); early self-isolation of those feeling unwell, feverish and having other symptoms of influenza; avoiding contact with sick people; and avoiding touching one's eyes, nose or mouth.

In addition, the [Occupational Safety and Health Administration](#),¹¹ a division of the United States Department of Labor, has provided an [employer guidance to reducing all workers potential exposure to the seasonal flu virus](#),¹¹ which offers a plethora of useful information including the following recommendations:

Promote Hand Hygiene and Cough Etiquette

Post signs that tell workers, visitors, and clients the steps for proper hand hygiene and cough etiquette.

Workers, visitors, and clients should have easy access to supplies such as:

- "No touch" wastebaskets for used tissues
- Soap and water
- Alcohol-based hand rubs
- Disposable towels
- Cleaning and sanitation materials

Lobbies, halls, and restrooms should have the above items and workers should know where they are.

Hand Hygiene	Cough Etiquette
Wash hands after blowing your nose, coughing, sneezing, or coming into contact with mucus or contaminated objects and surfaces.	Cover coughs and sneezes with a tissue, or cough and sneeze into your upper sleeve(s).
Apply soap and water: rub soapy hands together for at least 20 seconds, rinse hands with water, and dry completely.	Dispose of used tissues in "no-touch" wastebaskets.
Alcohol-based hand rubs: If soap and water are not available, use of an alcohol-based hand rub is a helpful interim measure until hand washing is possible. When using an alcohol-based hand rub, apply liquid to palm of hand, cover all surfaces of the hands with the liquid, and rub hands together until dry.	

Keep the Workplace Clean

Frequently clean all commonly touched work surfaces, work areas, and equipment (e.g., telephones, doorknobs, lunch areas, countertops, copiers, etc.).

Use the cleaning agents that are usually used in these areas and follow the directions on the label. No additional disinfection beyond routine cleaning is recommended by CDC.

Provide disinfectants and disposable towels for workers to use to clean their work spaces and surfaces and to keep work areas clean.



Hand Hygiene – Clean Hands Save Lives!

As described previously, keeping hands clean is one of the most important steps we can take to avoid getting sick and spreading germs to others.

It is best to wash your hands with soap and clean running water for 20 seconds – or about the amount of time it takes to sing the “Happy Birthday” song twice. Then it is recommended to dry your hands with a clean paper towel.

However if soap and clean running water are not available, use an alcohol-based sanitizer to sanitize your hands. Alcohol-based hand sanitizers are fast acting and significantly reduce the number of germs on the skin. An alcohol-based hand sanitizer like PURELL® is a topical antimicrobial product which kills 99.99% of most common germs that can cause illness, including the flu and cold viruses.

When Should You Wash Your Hands ([according to the CDC](#))¹²

- Before preparing or eating food
- After going to the restroom
- After changing diapers or cleaning up a child who has gone to the bathroom
- Before and after tending to someone who is sick
- After blowing your nose, coughing or sneezing
- After handling an animal or animal waste
- After handling garbage
- Before and after treating a cut or wound

Follow these five steps to wash your hands the right way every time:

- Wet your hands with clean running water (warm or cold), turn off the tap and apply soap
- Lather your hands by rubbing them together with the soap. Be sure to lather the backs of your hands, between your fingers and under your nails
- Scrub your hands for at least 20 seconds. Need a timer? Hum the “Happy Birthday” song from beginning to end twice.
- Rinse your hands well under clean running water.
- Dry your hands using a clean paper towel.

Facility Surface Cleaning and Disinfecting

In addition to having building occupants and employees practice good hand hygiene, it is also important to maintain a clean and healthy building environment through effective surface cleaning and disinfecting.

The influenza virus may live outside the body on surfaces for up to 24 hours, [according to the CDC](#).¹³ [The virus can be killed](#)¹³ by temperatures above 167°F (75°C), and the virus is also killed by ingredients found in many cleaning products such as chlorine, hydrogen peroxide, detergents (soap), iodophors (iodine-based antiseptics), and alcohol.

There are also several EPA-registered disinfectants which have the influenza virus kill claim, with options available which are either ethyl alcohol, quat or bleach-based. Please refer to the chart later in this document listing these disinfectant options.

It is recommended that your custodial team evaluate and implement measures to minimize the potential transmission of the influenza virus via hard surfaces through good sound cleaning and disinfecting procedures, with a focus on areas which may have the greatest likelihood of potential environmental contamination such as restrooms, food preparation areas and high touch surfaces.

High touch surfaces in your facility to focus on may include:

- Door handles and knobs
- Light switches
- Hand rails
- Elevator buttons
- Phones
- Sinks and faucets
- Restroom stalls and dispensers
- Vending machines
- Food preparation surfaces
- Breakroom, restaurant and cafe tables and chairs
- Microwave, refrigerator and kitchen appliance handles
- Coffee machines
- Copier, printer and fax control buttons
- Cabinet and file drawer handles
- Hand rails
- Chair arms
- Desks
- Counter tops
- Front desk and lobby surfaces
- Equipment controls
- Wheelchairs and walkers
- Computer keyboards and mouse
- Remote controls
- Recreation equipment



Disinfectant Guidelines

When using a disinfectant, it is critical to make sure that the proper products have been selected for your building surfaces and anticipated soils, and that your custodial crew has been properly trained on the use of the chemicals, tools and equipment provided. Some helpful tips to consider include:

- **Clean the surface first:** Disinfectants primary purpose is to kill microorganisms, and as such they are typically not as good at cleaning surfaces as a general purpose cleaning chemical. While there are some one-step cleaner/disinfectants available, it is necessary to use a general purpose or bioactive cleaner or degreaser to pre-clean heavily soiled areas – and it is helpful to note that using microfiber cleaning cloths and mops also assist to increase the efficacy of the cleaning chemical in removing soils on building surfaces. Cleaning equipment such as the WAXIE VERSA Cleaning Caddy are also extremely effective at removing soils from building surfaces prior to disinfecting.
- **Select the appropriate disinfectant:** There are a plethora of disinfectants on the market in a variety of different packages, and it is important to note the listed kill claims on your selected disinfectant so that you can be sure that the product will be effective for the specific circumstances and pathogens in your building. Also take note of compatibility of the disinfectant with your building surfaces – some products are not intended for use on certain surfaces and may either damage surfaces or have decreased efficacy.
- **Read the disinfectant label instructions:** Once the appropriate disinfectant has been selected, follow the instructions listed on the label to ensure proper usage. If the product is a concentrate, make sure to dilute at the recommended amounts, and apply to surfaces as described, using recommended Personal Protective Equipment (PPE).
- **Ensure that the disinfectant has enough surface contact dwell time:** Depending on the specific disinfectant and desired pathogen kill, there will be a range of dwell time which will be needed to ensure that the surfaces have been effectively disinfected. Some contact times are as long as 10 minutes (although some are as short as 30 seconds to 1 minute), and it is imperative that the disinfectant solution remain wet and active on the surface for the prescribed amount of time in order to ensure that the targeted pathogens have been successfully eliminated.
- **Train your custodial staff:** Disinfectants are designed to kill (they have toxic properties and are listed as pesticides), and as such care should be taken when determining the appropriate amount of disinfectant to use, and the appropriate surfaces on which to use it. Focus should be on applying disinfectant to potential high touch surfaces, and staff should be trained on proper dilution, application, recommended Personal Protective Equipment (PPE), surface rinsing, disinfectant chemical disposal and clean up as prescribed on the selected disinfectant label.

*What's the difference between a cleaner and a disinfectant?*¹⁴

Cleaners are chemical products used to remove soil, dirt, dust, organic matter, and germs. Disinfectants are chemical products that destroy or deactivate germs – disinfectants typically have no effect on dirt, soil or dust.

Sources

1. Centers for Disease Control and Prevention website, *About Flu / Seasonal Influenza (flu)*, updated October 5, 2017
2. Centers for Disease Control and Prevention website, *Influenza (Flu) Viruses / Seasonal Influenza (flu) / About Flu*, updated December 15, 2017.
3. Centers for Disease Control and Prevention website, *How Flu Spreads / Seasonal Influenza (flu) / About Flu*, updated October 5, 2017
4. Centers for Disease Control and Prevention website, *People at High Risk of Developing Flu-Related Complications / About Flu*, updated January 3, 2018
5. Centers for Disease Control and Prevention website, *Key Facts About Seasonal Flu Vaccine / Seasonal Influenza (flu) / Prevent Flu*, updated October 30, 2017
6. Centers for Disease Control and Prevention website, *Disease Burden of Influenza / Seasonal Influenza (flu) / About Flu*, revised October 2017
7. Centers for Disease Control and Prevention website, *The Flu Season / Seasonal Influenza (flu) / About Flu*, updated July 26, 2016
8. Centers for Disease Control and Prevention website, *Flu Symptoms & Complications / Seasonal Influenza (flu) / Symptoms & Diagnosis*, updated July 28, 2017
9. Centers for Disease Control and Prevention website, *Cold Versus Flu / Seasonal Influenza (flu) / Symptoms & Diagnosis*, updated August 11, 2016
10. World Health Organization website, *Media Centre / Influenza (Seasonal) / Factsheet*, reviewed December 2017.
11. Occupational Health and Safety Administration website, *Employer Guidance / Reducing All Workers' Exposure to Season Flu Virus*, retrieved January 5, 2018
12. Centers for Disease Control and Prevention website, *Wash Your Hands/CDC Features/Healthy Living*, updated April 10, 2017
13. Centers for Disease Control and Prevention website, *Influenza (Flu) / Cleaning to Prevent the Flu*, 2010
14. Toxics Use Reduction Institute (TURI) UMass Lowell, *Guide to Safe and Effective Cleaning and Disinfecting*, updated November 10, 2016

#FightTheFlu with advanced hand hygiene technology



WAXIE Select Foam Handwash Dispensing Systems

WAXIE Select Foam Handwash Dispensing Systems add a touch of class to your facility and are available with refreshing, spa-quality foam soap formulations that people love.

Whether you choose manual, touch-free or our new touch-free systems powered by energy that's right on the refill, your maintenance team will appreciate the advanced features that make maintenance a breeze.

Occupant Wellness and Response Guide

HAND HYGIENE

Item #	Product	Pack	Type
WAXIE Select™ NRG™ No-Touch Foam Handwash Dispensing System featuring Battery-on-the-Refill Technology			
380079	WAXIE Select™ NRG™ No-Touch Clear & Mild Foam Handwash	2/1200ml / cs	Hand Soap
380104	WAXIE Select™ NRG™ No-Touch Pomeberry Foam Handwash	2/1200ml / cs	Hand Soap
380081	WAXIE Select™ NRG™ No-Touch Boost™ Foam Handwash	2/1200ml / cs	Hand Soap
380119	WAXIE Select™ NRG™ No-Touch Dispenser, 1200ml White	ea	Dispenser
380122	WAXIE Select™ NRG™ No-Touch Dispenser, 1200ml Brushed Metallic/Black	ea	Dispenser
380123	WAXIE Select™ NRG™ No-Touch Dispenser, 1200ml Black	ea	Dispenser
WAXIE Select™ No-Touch Foam Handwash Dispensing System			
380076	WAXIE Select™ No-Touch Clear & Mild Foam Handwash	2/1200ml / cs	Hand Soap
380078	WAXIE Select™ No-Touch Pomeberry Foam Handwash	2/1200ml / cs	Hand Soap
380077	WAXIE Select™ No-Touch Boost™ Foam Handwash	2/1200ml / cs	Hand Soap
380108	WAXIE Select™ NRG™ No-Touch Dispenser, 1200ml White	ea	Dispenser
380109	WAXIE Select™ NRG™ No-Touch Dispenser, 1200ml Brushed Metallic/Black	ea	Dispenser
380124	WAXIE Select™ NRG™ No-Touch Dispenser, 1200ml Black	ea	Dispenser
WAXIE Select™ Manual Foam Handwash Dispensing System			
385850	WAXIE Select™ Manual Cranberry Pink Lotion Foam Handwash	3/1250ml / cs	Hand Soap
385880	WAXIE Select™ Manual Green Certified Foam Handwash	3/1250ml / cs	Hand Soap
380075	WAXIE Select™ Manual Boost™ Foam Handwash	3/1250ml / cs	Hand Soap
385860	WAXIE Antibacterial Foam Handwash	3/1250ml / cs	Hand Soap
385870	WAXIE Select™ Manual Foam Hand, Hair and Body Wash	3/1250ml / cs	Hand/Hair/Body Soap
380105	WAXIE Select™ Manual Dispenser, 1250ml White	ea	Dispenser
380106	WAXIE Select™ Manual Dispenser, 1250ml Brushed Metallic/Black	ea	Dispenser
380107	WAXIE Select™ Manual Dispenser, 1250ml Black	ea	Dispenser



Occupant Wellness and Response Guide

HAND HYGIENE

Item #	Product	Pack	Type
WAXIE Clean & Soft® Roll Towel System			
850555	WAXIE Clean & Soft® #3900 White No-Touch Roll Towels	900'rl : 8 rl / cs	Roll Towel
850556	WAXIE Clean & Soft® #3000 Natural No-Touch Roll Towels	900'rl : 8 rl / cs	Roll Towel
850075	WAXIE-Green White No-Touch Roll Towels	900'rl : 6 rl / cs	Roll Towel
850598	WAXIE Clean & Soft™ #4800 Premium White No-Touch Roll Towels	800'rl : 6 rl / cs	Roll Towel
850554	WAXIE Clean & Soft® Electronic No-Touch System Dispenser	ea	Dispenser
850593	WAXIE Clean & Soft® Manual No-Touch System Dispenser	ea	Dispenser
850640	WAXIE Clean & Soft® Quick Touch System Dispenser	ea	Dispenser



Occupant Wellness and Response Guide

HAND HYGIENE

Item #	Product	Pack	Type
PURELL® ES8 Hand Sanitizer Dispensing System featuring Battery-on-the-Refill Technology			
389812	7754-02 PURELL® ES8 Professional Advanced Hand Sanitizer Foam	2/1200ml / cs	Hand Sanitizer
380073	7720-01 PURELL® ES8 Hand Sanitizer Dispenser, White	ea	Dispenser
380074	7724-01 PURELL® ES8 Hand Sanitizer Dispenser, Graphite	ea	Dispenser
PURELL® ES6 Touch-Free Hand Sanitizer Dispensing System			
389807	6453-02 PURELL® ES6 Professional Advanced Hand Sanitizer Foam	2/1200ml / cs	Hand Sanitizer
389815	6462-02 PURELL® ES6 Professional Advanced Hand Sanitizer Gel	2/1200ml / cs	Hand Sanitizer
380071	6420-01 PURELL® ES6 Hand Sanitizer Dispenser, White	ea	Dispenser
380072	6424-01 PURELL® ES6 Hand Sanitizer Dispenser, Graphite	ea	Dispenser
389816	7316-DS-SLV PURELL® ES6 Messenger™ Graphite Panel Floor Stand with Dispenser	ea	Dispenser
PURELL® ES4 Manual Hand Sanitizer Dispensing System			
389806	5054-02 PURELL® ES4 Professional Advanced Hand Sanitizer Foam	2/1200ml / cs	Hand Sanitizer
389814	5062-02 PURELL® ES4 Professional Advanced Hand Sanitizer Gel	2/1200ml / cs	Hand Sanitizer
380069	5020-01 PURELL® ES4 Hand Sanitizer Dispenser, White	ea	Dispenser
380070	5024-01 PURELL® ES4 Hand Sanitizer Dispenser, Graphite	ea	Dispenser
PURELL® ES Everywhere Hand Sanitizer System			
381632	PURELL® ESTM Everywhere System #1450-06 Advanced Instant Hand Sanitizer Gel	6/450ml / cs	Hand Sanitizer
381631	PURELL® ESTM Everywhere System #1450-DS Starter Kit Base with Refill Advanced Instant Hand Sanitizer Gel	8 / cs	Hand Sanitizer



Occupant Wellness and Response Guide

HAND HYGIENE

Item #	Product	Pack	Type
PURELL® Instant Hand Sanitizer Bottles			
381610	PURELL® #9651-24 Advanced Formula Instant Hand Sanitizer Gel, 4 oz Bottle	ea : 24 / cs	Hand Sanitizer
385710	PURELL® #9691-12 Advanced Green Certified Instant Hand Sanitizer Gel, 8 oz Pump	ea : 12 / cs	Hand Sanitizer
381665	PURELL® #9652-12 Advanced Formula Instant Hand Sanitizer Gel, 8 oz Pump	ea : 12 / cs	Hand Sanitizer
381781	PURELL® #9674-12 Advanced Formula Instant Hand Sanitizer Gel with Aloe, 8 oz Pump	ea : 12 / cs	Hand Sanitizer
385711	PURELL® #3691-12 Advanced Green Certified Instant Hand Sanitizer Gel, 12 oz Pump	ea : 12 / cs	Hand Sanitizer
381780	PURELL® #9639-12 Advanced Formula Instant Hand Sanitizer Gel with Aloe, 12 oz Pump	ea : 12 / cs	Hand Sanitizer
385716	PURELL® #5791-04 535ml Green Certified Instant Hand Sanitizer Foam, 535 ml Pump	ea : 4 / cs	Hand Sanitizer
381603	PURELL® #9624-24 FST™ Military Bottle, 3 oz Bottle	ea : 24 / cs	Hand Sanitizer
PURELL® Instant Hand Sanitizer Single Use			
390005	9620-12-125CT PURELL® Advanced Hand Sanitizer, Single Use in Display Box (125/bx)	125/bx - 12bx /cs	Hand Sanitizer
PURELL® Hand Sanitizing Wipes			
381682	9022-10 PURELL® Hand Sanitizing Wipes, Individually Wrapped (100/bx)	100/bx - 10bx / cs	Hand Sanitizer
381694	9113-06 PURELL® Hand Sanitizing Wipes, Non-Alcohol Formula, Tub (270 Count)	270/ tb - 6 tb/ cs	Hand Sanitizer
381704	9111-12 PURELL® Hand Sanitizing Wipes, Non-Alcohol Formula, Tub (100 Count)	100/ tb - 12 tb/ cs	Hand Sanitizer
381669	9031-06 PURELL® Hand Sanitizing Wipes, Alcohol Formula, Tub (175 Count)	175/ tb - 6 tb/ cs	Hand Sanitizer
381668	9030-12 PURELL® Hand Sanitizing Wipes, Alcohol Formula, Tub (80 Count)	80/ tb - 12 tb/ cs	Hand Sanitizer



FACIAL TISSUE

Item #	Product	Pack	Size
WAXIE Brand Facial Tissue			
851504	WAXIE Select™ 2-Ply White Premium Facial Tissue, Flat Box	100 sheet / bx : 30 bx / cs	Facial Tissue
851443	WAXIE 5100 Clean & Soft™ White 2-Ply Facial Tissue, Flat Box	100 sheet / bx : 30 bx / cs	Facial Tissue
851435	WAXIE-Green 8100 White 2-Ply Facial Tissue, Flat Box	110 sheet / bx : 30 bx / cs	Facial Tissue
851505	WAXIE Select™ 2-Ply White Premium Facial Tissue, Cube Box	85 sheet / bx : 36 bx / cs	Facial Tissue
851433	WAXIE 5096 Clean & Soft™ White 2-Ply Facial Tissue, Cube Box	96 sheet / bx : 36 bx / cs	Facial Tissue



SURFACE CLEANING & DISINFECTING CHEMICALS

Item #	Product	Pack	Disinfectant Type	EPA Registration	Dilution	Contact Time Required for Influenza Virus
WAXIE Brand Disinfectants						
170700	WAXIE Solsta 764 Lemon Quat Disinfectant Cleaner	3L - 4/cs	Quat	1839-169-14994	2 oz / gl	10 minutes
170394	WAXIE 764 Lemon Quat Disinfectant Cleaner	4 gl / cs	Quat	1839-169-14994	2 oz / gl	10 minutes
170401	WAXIE Solsta 710 Multi-Purpose Disinfectant Cleaner	3L - 4/cs	Quat	1839-167-14994	1 oz / gl	10 minutes
170280	WAXIE Medical Disinfectant Wipes	65 wipes / tub : 6 tubs / cs	Quat	1839-174-14994	RTU	10 minutes
170041	WAXIE Hospital Spray Aerosol	12 - 16 oz / cs	Ethyl Alcohol	33176-5-14994	RTU	10 minutes
170081	WAXIE Swish Disinfectant Cleaner Aerosol	12 - 20 oz / cs	Phenol	33176-6-14994	RTU	10 minutes
170059	WAXIE 730 HP Disinfectant Cleaner	3L - 4/cs	Hydrogen Peroxide	45745-11-14994	2 oz / gl	1 minute
170058	WAXIE HP Disinfectant Cleaner	4 gl / cs	Hydrogen Peroxide	45745-11-14994	2 oz / gl	1 minute
170018	WAXIE Germicidal Ultra Bleach	3 gl / cs	Bleach	70271-13-14994	6 oz / gl	5 minutes
PURELL® Surface Disinfectants						
170046	PURELL® Professional Surface Disinfectant	6 qt / cs	Ethyl Alcohol	84368-1-84150	RTU	30 seconds
170055	PURELL® Professional Surface Disinfectant	4 gl / cs	Ethyl Alcohol	84368-1-84150	RTU	30 seconds
170054	PURELL® Foodservice Surface Disinfectant	6 qt / cs	Ethyl Alcohol	84368-1-84150	RTU	30 seconds
170038	PURELL® Foodservice Surface Disinfectant	4 gl / cs	Ethyl Alcohol	84368-1-84150	RTU	30 seconds
170047	PURELL® Healthcare Surface Disinfectant	6 qt / cs	Ethyl Alcohol	84368-1-84150	RTU	30 seconds
170039	PURELL® Healthcare Surface Disinfectant	4 gl / cs	Ethyl Alcohol	84368-1-84150	RTU	30 seconds

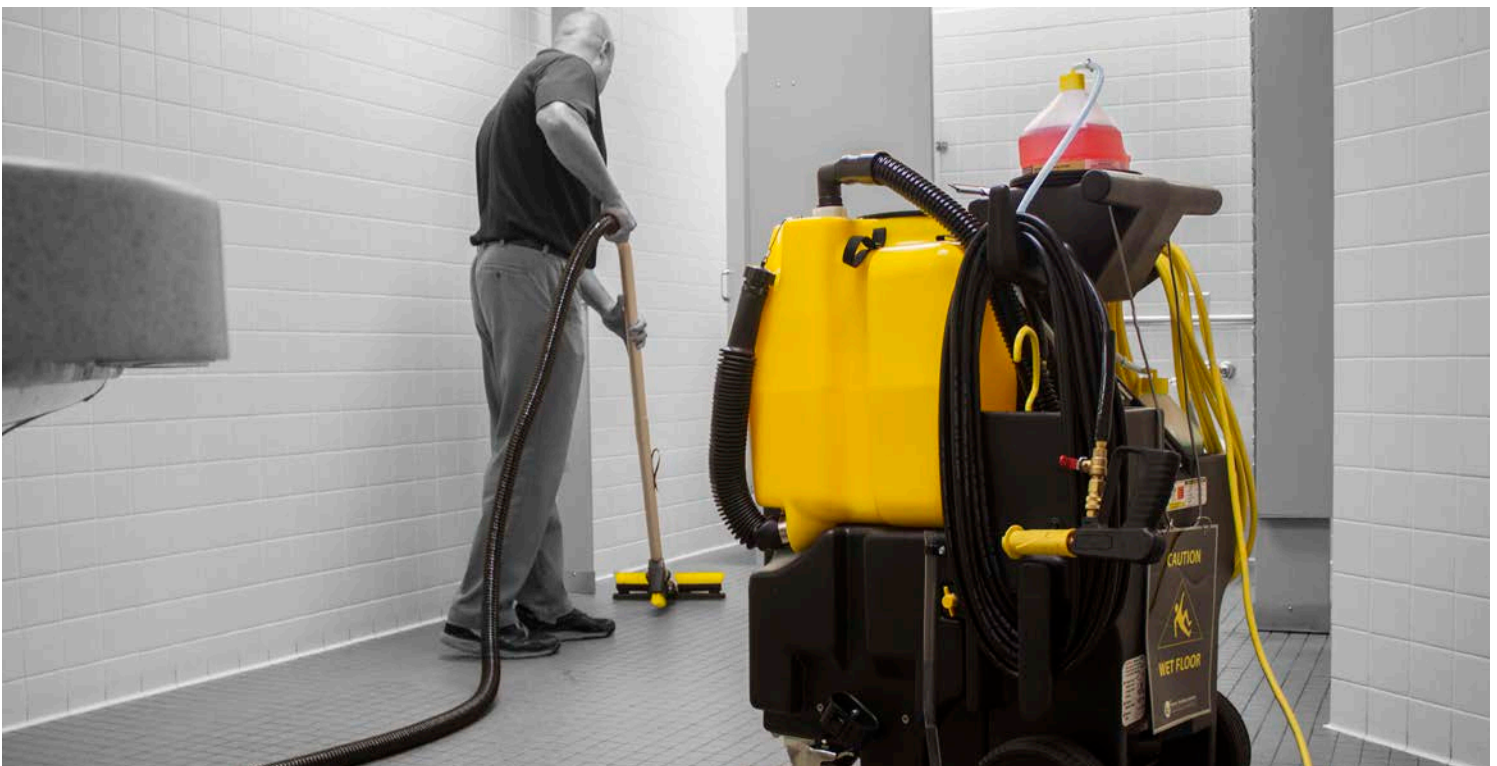
APPLICATION TOOLS & ACCESSORIES

Item #	Product	Pack	Size	Type
WAXIE Multi-Task Wipes and Bucket System - for use with any disinfectant cleaner				
1033704	WAXIE Multi-Task Wipes Bucket and Lid	3 gallon 4 ea / cs	3 lbs	Wiping System
1033703	WAXIE Multi-Task Wipes	100 / rl : 6 rl / cs	3 lbs	Wiping System
WAXIE Microfiber Cloths				
770400	WAXIE Microfiber Terry Cloth, Blue	12 / dz : 15 dz / cs	16"x16"	Microfiber Cloth
770401	WAXIE Microfiber Terry Cloth, Green	12 / dz : 15 dz / cs	16"x16"	Microfiber Cloth
770402	WAXIE Microfiber Terry Cloth, Pink	12 / dz : 15 dz / cs	16"x16"	Microfiber Cloth
770403	WAXIE Microfiber Terry Cloth, Yellow	12 / dz : 15 dz / cs	16"x16"	Microfiber Cloth
770404	WAXIE Microfiber Terry Cloth, Purple	12 / dz : 15 dz / cs	16"x16"	Microfiber Cloth
770505	WAXIE Microfiber Terry Cloth, Red	12 / dz : 15 dz / cs	16"x16"	Microfiber Cloth
777003	WAXIE Microfiber Terry Cloth, Orange	12 / dz : 15 dz / cs	16"x16"	Microfiber Cloth
777004	WAXIE Microfiber Terry Cloth, Gray	12 / dz : 15 dz / cs	16"x16"	Microfiber Cloth
Trigger Sprayers and Bottles				
890040	WAXIE Trigger Sprayer for 24 or 32 oz Bottle	24-32 oz	ea	Trigger Sprayer
890045	WAXIE Bottle 24 oz	24 oz	ea	Spray Bottle
890050	WAXIE Bottle 32 oz	32 oz	ea	Spray Bottle



SURFACE CLEANING & DISINFECTING EQUIPMENT

Item #	Product	Pack	Power	Type	Notes
WAXIE VERSA High Performance Cleaning Caddy					
577535	WAXIE VERSA High Performance Cleaning Caddy	ea	Electric	Sprayer, Cleaner and Wet/Dry Vac	17 Gallon
577537	WAXIE VERSA II High Performance Cleaning Caddy	ea	Electric	Sprayer, Cleaner and Wet/Dry Vac	12 Gallon
Mondo Vap® Steam/Vapor Cleaning System					
577800	Mondo Vap® 2400 Continuous Fill Steam System with TANCS	ea	Electric	Steam/Vapor Cleaner	Chemical-free



GLOVES

Item #	Product	Pack	Size	Type	Color
WAXIE-Shield Powder-Free Nitrile Exam Gloves					
790072	WAXIE-Shield W8645 Powder-Free Nitrile Exam Gloves	100 / bx : 10 bx / cs	Small	Nitrile - Exam	Blue
790071	WAXIE-Shield W8645 Powder-Free Nitrile Exam Gloves	100 / bx : 10 bx / cs	Medium	Nitrile - Exam	Blue
790069	WAXIE-Shield W8645 Powder-Free Nitrile Exam Gloves	100 / bx : 10 bx / cs	Large	Nitrile - Exam	Blue
790073	WAXIE-Shield W8645 Powder-Free Nitrile Exam Gloves	100 / bx : 10 bx / cs	X-Large	Nitrile - Exam	Blue
790370	WAXIE-Shield W8641 Powder-Free Nitrile Exam Gloves	100 / bx : 10 bx / cs	Small	Nitrile - Exam	White
790371	WAXIE-Shield W8641 Powder-Free Nitrile Exam Gloves	100 / bx : 10 bx / cs	Medium	Nitrile - Exam	White
790372	WAXIE-Shield W8641 Powder-Free Nitrile Exam Gloves	100 / bx : 10 bx / cs	Large	Nitrile - Exam	White
790373	WAXIE-Shield W8641 Powder-Free Nitrile Exam Gloves	100 / bx : 10 bx / cs	X-Large	Nitrile - Exam	White
WAXIE-Shield Powder-Free Nitrile General Purpose Gloves					
791250	WAXIE-Shield W8644 Powder-Free Nitrile General Purpose Gloves	100 / bx : 10 bx / cs	Small	Nitrile - General Purpose	Blue
791255	WAXIE-Shield W8644 Powder-Free Nitrile General Purpose Gloves	100 / bx : 10 bx / cs	Medium	Nitrile - General Purpose	Blue
791260	WAXIE-Shield W8644 Powder-Free Nitrile General Purpose Gloves	100 / bx : 10 bx / cs	Large	Nitrile - General Purpose	Blue
791265	WAXIE-Shield W8644 Powder-Free Nitrile General Purpose Gloves	100 / bx : 10 bx / cs	X-Large	Nitrile - General Purpose	Blue
790150	WAXIE-Shield W8643 Powder-Free Nitrile General Purpose Gloves	100 / bx : 10 bx / cs	Small	Nitrile - General Purpose	White
790151	WAXIE-Shield W8643 Powder-Free Nitrile General Purpose Gloves	100 / bx : 10 bx / cs	Medium	Nitrile - General Purpose	White
790152	WAXIE-Shield W8643 Powder-Free Nitrile General Purpose Gloves	100 / bx : 10 bx / cs	Large	Nitrile - General Purpose	White
790153	WAXIE-Shield W8643 Powder-Free Nitrile General Purpose Gloves	100 / bx : 10 bx / cs	X-Large	Nitrile - General Purpose	White
790380	WAXIE-Shield W8642 Powder-Free Nitrile General Purpose Gloves	100 / bx : 10 bx / cs	Small	Nitrile - General Purpose	Black
790381	WAXIE-Shield W8642 Powder-Free Nitrile General Purpose Gloves	100 / bx : 10 bx / cs	Medium	Nitrile - General Purpose	Black
790382	WAXIE-Shield W8642 Powder-Free Nitrile General Purpose Gloves	100 / bx : 10 bx / cs	Large	Nitrile - General Purpose	Black
790383	WAXIE-Shield W8642 Powder-Free Nitrile General Purpose Gloves	100 / bx : 10 bx / cs	X-Large	Nitrile - General Purpose	Black

GLOVES

Item #	Product	Pack	Size	Type	Color
WAXIE-Shield Powder-Free Latex Exam Gloves					
791950	WAXIE-Shield W8622 Powder-Free Latex Exam Gloves	100 / bx : 10 bx / cs	Small	Latex - Exam	Natural
791955	WAXIE-Shield W8622 Powder-Free Latex Exam Gloves	100 / bx : 10 bx / cs	Medium	Latex - Exam	Natural
791960	WAXIE-Shield W8622 Powder-Free Latex Exam Gloves	100 / bx : 10 bx / cs	Large	Latex - Exam	Natural
791965	WAXIE-Shield W8622 Powder-Free Latex Exam Gloves	100 / bx : 10 bx / cs	X-Large	Latex - Exam	Natural
WAXIE-Shield Powder-Free Latex General Purpose Gloves					
791850	WAXIE-Shield W8625 Powder-Free Latex General Purpose Gloves	100 / bx : 10 bx / cs	Small	Latex - General Purpose	Natural
791855	WAXIE-Shield W8625 Powder-Free Latex General Purpose Gloves	100 / bx : 10 bx / cs	Medium	Latex - General Purpose	Natural
791860	WAXIE-Shield W8625 Powder-Free Latex General Purpose Gloves	100 / bx : 10 bx / cs	Large	Latex - General Purpose	Natural
791865	WAXIE-Shield W8625 Powder-Free Latex General Purpose Gloves	100 / bx : 10 bx / cs	X-Large	Latex - General Purpose	Natural



PERSONAL PROTECTIVE EQUIPMENT

Item #	Product	Pack	Size	Type	Color
ProGuard® Safety Glasses and Goggles					
791360	ProGuard® Standard Series Safety Glasses	ea	Fits All	Safety Glasses	Clear/Brown
792700	ProGuard® 8600 Series Safety Glasses	ea	Fits All	Safety Glasses	Clear/Black
799323	ProGuard® 8600 Series Safety Glasses	ea : 12 / bx	Fits All	Safety Glasses	Gray/Gray
791350	ProGuard® 808 Series Safety Goggles	ea	Fits All	Safety Goggles	Clear/Clear
Emergency Cleanup and SOS Lockdown Kits					
910720	WAXIE Emergency Cleanup Kits	ea : 5 ea / bx	Kit	OSHA Bloodborne Pathogens Cleanup	
799201	SOS Classroom Lockdown Kits	ea	5GL	Portable Toilet Kit	



WHAT WE DO & WHY WE'RE DIFFERENT

Ongoing Service And Support

WAXIE has been the experts in clean since 1945, and we are committed to helping our customers keep their facilities cleaner, healthier, greener and safer. That means creating customized cleaning solutions to meet your specific needs, and then providing the ongoing training and support to help you achieve a cleaner and healthier building environment at the best value and total lowest cost.

And because the WAXIE organization has been purpose-built from the ground up to serve and provide ongoing support for those who are responsible for delivering clean and healthy buildings, you can count on WAXIE to come through with the cleaning industry-specific help you need, when you need it.

Whether it's an onsite cleaning consultation, a timely equipment repair, a bilingual training session, or an introduction to the latest laborsaving cleaning innovation and technology, we have proven the extent of our dedication to our customers and the cleaning industry time and again. Test us out and we'll prove it to you.

DISCOVER THE WAXIE DIFFERENCE

The Most Trusted Name In Clean. Since 1945.

WAXIE understands that you need to provide a clean, fresh and healthy experience for visitors to your property at the total lowest cost. WAXIE delivers innovative cleaning solutions, along with other facility maintenance supplies combined with industry-specific expertise and consultation that contribute to lower operating costs, enhanced public image and cleaner surfaces, all while helping you create a favorable building occupant experience.

WAXIE has Inventory Centers strategically located throughout the Western United States to serve you. WAXIE is also a member-owner of Network Services Company, a streamlined and collaborative collection of the best independent distributors in the world providing an efficient and integrated approach to servicing large account portfolios.

Please contact your WAXIE Account Consultant today to schedule a consultation.



The Most Trusted Name In Clean. Since 1945.

Corporate Headquarters | 9353 Waxie Way | San Diego, CA 92123

(800) 995-4466 | www.waxie.com

© 2017 WAXIE Sanitary Supply

Rev. 021919