

The Windshear™ Storm

Compact size, low amp draw and lightweight with new “Driven Air” technology for fast drying

WAXIE Item #571787



Powerful Airflow

When time is money, you get more drying productivity and profits with the new Windshear Storm! Utilizing all-new “Driven Air” technology, this compact unit is changing the blower/dryer market as we know it today. The Windshear Storm is dramatically lighter and smaller, offering high airflow volume with velocity of 3,400 feet per minute. What’s more, with a compact and light “briefcase-style” profile and maximum running amps of only 2.8, this unit creates the perfect Storm of drying performance, size and affordability.

Conserve Space and Energy

Available in standard or deluxe models, the upgraded version allows you to daisy chain up to five units on one circuit for energy-efficient drying, while reducing storage concerns in transport vehicles by stacking. Professional carpet cleaners and restoration professionals can take twice as many units to the job site, compared to traditional blowers. The Windshear Storm truly takes drying to a whole new level!

Lightweight, Slim Design

The WindshearStorm is made of durable poly materials for years of continuous use. Weighing up to 45% less than traditional blowers at just 17.75 pounds, the compact design delivers increased power in a lighter, slimmer profile and offers easier transport and storage.

Applications

The Windshear Storm is perfect for drying:

- Carpets
- Rugs
- Hard floors
- General air circulation
- Paint
- Draperies
- Upholstery
- And more

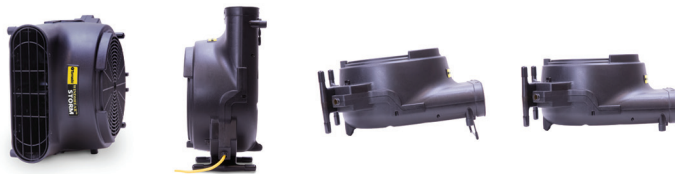
The Windshear™ Storm. Compact size, low amp draw and lightweight with new “Driven Air” technology for fast drying

Half the
Size of a
Traditional
Blower

Key Features

- Two Models Available
- Deluxe model features a kickstand and the ability to daisy chain five units together
- Compact size allows you to fit two Storms where one standard blower would fit
- Weighs up to 45% less than a traditional blower
- Low maximum operating AMPs of 2.8
- New “Driven Air” technology offers superior performance!
- Air flow velocity of 3,400 feet per minute
- Multi-directional operation

WINDSHEAR™ STORM



Multiple Position Settings

If you're looking for greater drying flexibility, the deluxe unit can be placed horizontally, vertically, on its side against the wall, or at a 20 degree angle with the kick-stand, directing airflow exactly where you need it most. The standard model offers two operating positions.



Daisy-Chainable

The deluxe model offers an integrated power outlet, enabling you to connect up to five air movers together at one time for whole-room drying in large spaces.

Two Models Available

Choose the standard model, or for even greater flexibility, opt for the addition of a kick-stand and circuit breaker to daisy chain up to six units together simultaneously.



Stack Twice as Many Units in the Same Space

Now with the compact size of the Windshear Storm, you can store and transport twice as many blowers than before!

Quieter than Conventional Air Movers

If noise is an issue, the Windshear Storm measures 66.5 dB at its lowest setting, and is perfect for noise-sensitive indoor environments such as schools, libraries, hospitals, hotels and more.

PRODUCT SPECIFICATIONS		
MODEL	WINDSHEAR STORM	WINDSHEAR STORM
CATALOG NUMBER	98778	98780
DIMENSIONS (L X W X H)	22 in x 16.5 in x 11.5 in 56 cm x 42 cm x 29 cm	22 in x 16.5 in x 11.5 in 56 cm x 42 cm x 29 cm
NET WEIGHT	17.75 lbs. / 8 kg	18 lbs. / 8.2 kg
RUNNING AMPS	2.8 max	2.8 max
POWER	120V	120V
AIR VELOCITY	3,400 FPM	3,400 FPM
AIR-FLOW DIRECTION	0° / 30° / 90°	0° / 30° / 90°
KICKSTAND	No	Yes
DAISY CHAIN CAPABLE	No	Yes
STACKABLE	Yes	Yes
POWER CORD	20 ft. / 6 m	20 ft. / 6 m



www.tornadovac.com
Toll free: 1-800-VACUUMS
Phone: 630.818.1300
Fax: 630.818.1301

Distributed by: **WAXIE**®
SANITARY SUPPLY
(800) 995-4466 www.waxie.com