

with  
**ODOURAZE**®  
odor neutralizer

**MADE IN  
USA**



**SMARTCell™** cartridges  
are 100% recyclable.

## Keep your space feeling fresh with **SMARTCell™** by WAXIE!

Our unique system uses a reliable gravity-fueled system to continually replenish the fragrance and never requires batteries. The **SMARTCell™** system neutralizes odors in up to 6,000 cubic feet of space keeping your space feeling fresh. Our cartridge is also fully recyclable with no disassembly required! Just toss in the recycling bin after use.

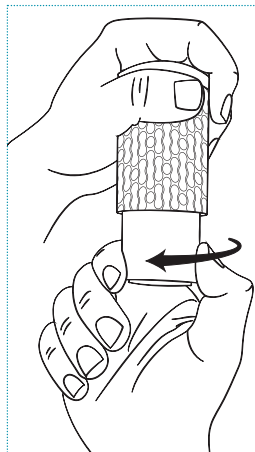
- Environmentally friendly
- No batteries
- Pure fragrance
- No propellants which contain VOC's
- Consumer preferred fragrances
- Consistent level of fragrance throughout refill life
- Simple installation

# How does SMARTCell™ by WAXIE work?

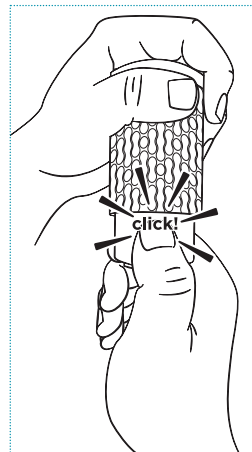
## 1. TWIST

Hold as shown and twist bottom clockwise firmly 1/4 turn until you hear and feel a click. The click indicates the unit is sealed. If it does not seal, leaking can occur.

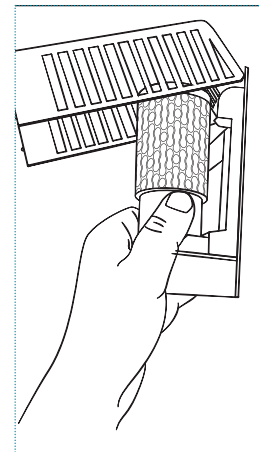
**DO NOT** turn counter-clockwise. Handle with care. Place refill into mounted dispenser. Make sure the dispenser is located somewhere with active airflow.



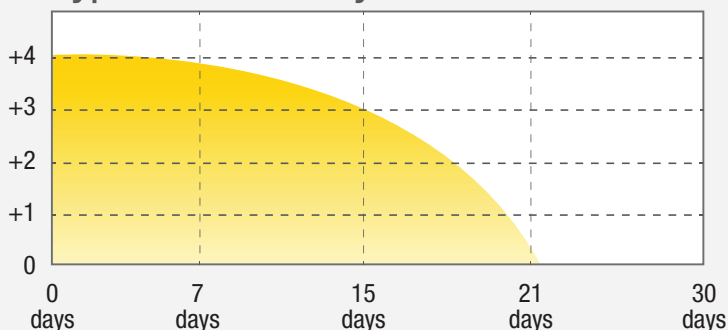
## 2. CLICK



## 3. PLACE

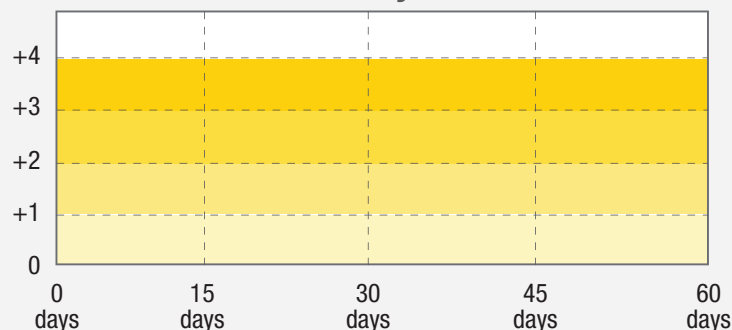


### Typical Gel 30-Day Performance



**VS.**

### SMARTCell™ 60-Day Performance

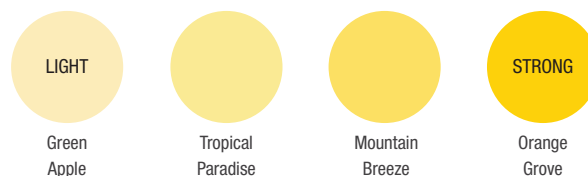


### SMARTCELL™ DISPENSERS & REFILLS

Item #	Product	UOM	Case
161700	SMARTCell™ Dispenser – White	each	12/cs
161710	SMARTCell™ Orange Grove 60-Day Odor Neutralizer Refill	each	6/cs
161720	SMARTCell™ Mountain Breeze 60-Day Odor Neutralizer Refill	each	6/cs
161726	SMARTCell™ Tropical Paradise 60-Day Odor Neutralizer Refill	each	6/cs
161727	SMARTCell™ Green Apple 60-Day Odor Neutralizer Refill	each	6/cs

Dispenser: Case Pack: Weight 3.75 lbs., Case Cube: 0.47 Refills: Case Weight 1.5 lbs., Case Cube: 0.12

### SCENT INTENSITY SCALE



**The Most Trusted Name In Clean. Since 1945.**

Corporate Headquarters | 9353 Waxie Way | San Diego, CA 92123  
(800) 995-4466 | [www.waxie.com](http://www.waxie.com) © 2022 WAXIE Sanitary Supply